



Globular Health Initiative

SYLLABUS
introductory
learning
course on
**CLIMATE
CHANGE**

Globular Health Initiative - Development Program





Globular Health Initiative



“

Global Health is the future of medicine

Prof. Kenji Shibuya





Globular Health Initiative

Globular Health Initiative

Education Program



Development Program



Public Relation



Social Media





Globular Health Initiative

Globular Health Initiative

Visi

Menjadi jembatan pembangunan kesehatan Indonesia secara komprehensif, kolaboratif, dan kontinu.

Misi

Menjadikan Globular sebagai sumber informasi terpercaya yang menawarkan perspektif global mengenai masalah-masalah kesehatan di Indonesia

Mengadakan kegiatan-kegiatan pengembangan kapabilitas, edukatif, dan strategis sesuai kebutuhan masyarakat

Membangun relasi dan kerja sama dengan individu/ organisasi/ lembaga terkait pembangunan kesehatan





Globular Health Initiative

Climate Change

“ Climate change is the biggest global health threat of 21st Century. Climate change will have its greatest impact on those who already the poorest in the world: it will deepen inequities and the effects of global warming will shape the future of health among all peoples

The Lancet, May 2009





Globular Health Initiative



“

When climate change is framed as a health issue, rather than purely as an environmental, economic, or technological challenge, it becomes clear that we are facing a predicament that strikes at the heart of humanity.

Helena Wang, Richard Horton.

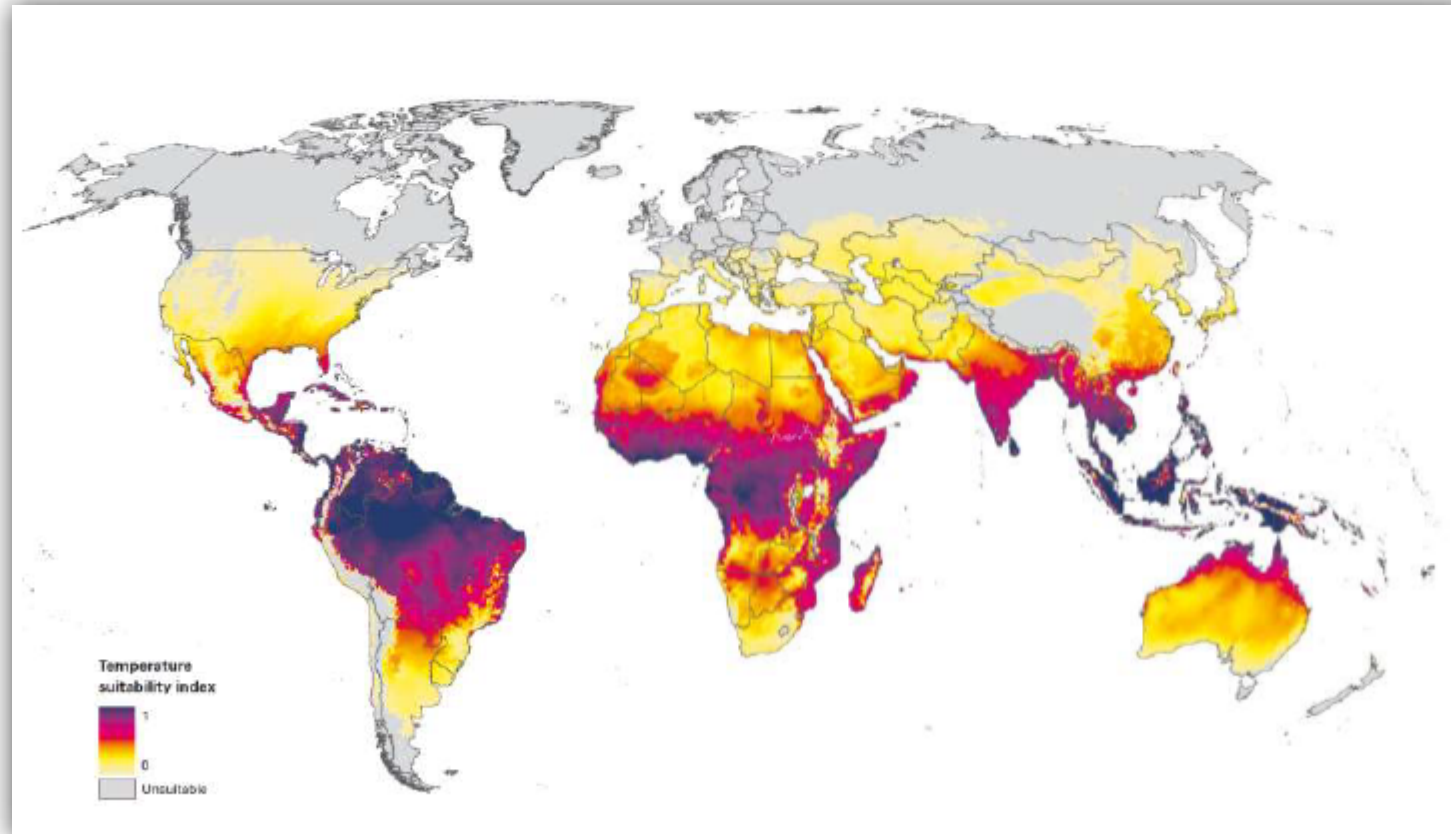
“Tackling climate change: the greatest opportunity for global health.” - The Lancet, June 2015.





Globular Health Initiative

Pemetaan Perubahan Distribusi Penyakit Malaria (WHO, 2012)

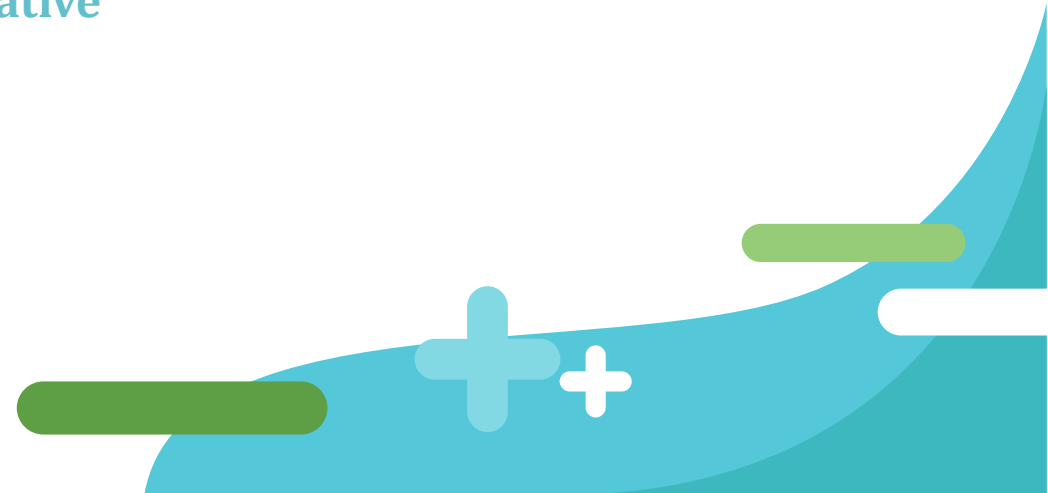




Globular Health Initiative

Introductory Learning Course On Climate Change

SYLLABUS
Development Program
Globular Health Initiative





Globular Health Initiative



Help reverse climate change before it's too late.





Gloabular Health Initiative

Health Care Without Harm's
Health Energy Initiative

presents

The Health Impacts of Energy from Coal



10 March 2017 | 8:00 AM - 5:00 PM
Cocoon Boutique Hotel
Quezon City



For details, e-mail Ann Lustresano
at ann@no-harm.org



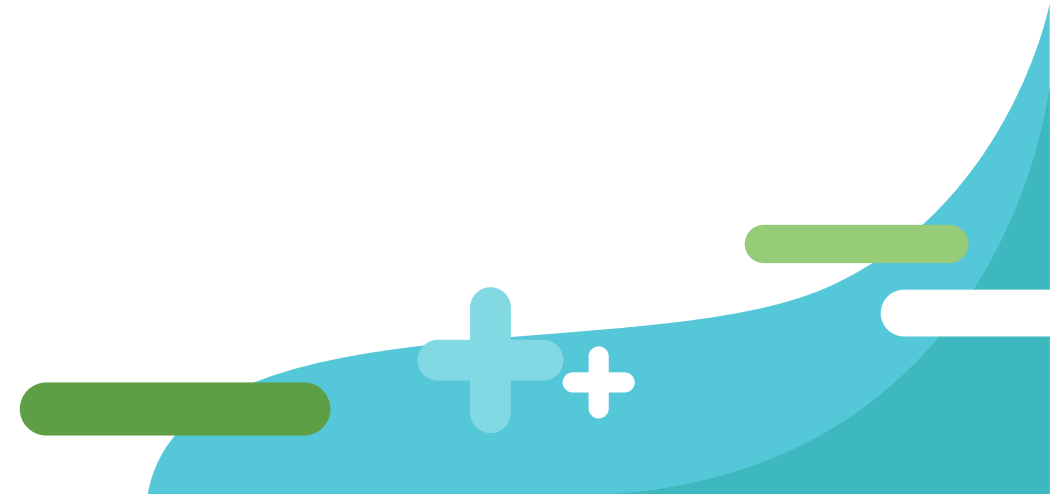


Globular Health Initiative

Target Groups & Learning Objective

A. The course should be of particular interest to:

- Faculty, University Students
- NGO
- Any community interested on the subject





Globular Health Initiative

B. After completing the course, participants will be able to:

- **Understand about SDGs especially on Climate Change and Human Health**
- **Analyze and outline basic planning process to deliver climate change action**
- **Understand about SDGs in general**
- **Explain and correlate Goal 13 and Goal 3 especially with the conditions in Indonesia.**
- **Outline basic elements of planning processes to deliver climate change action**
- **Analyze principal challenges and opportunities for climate change action**
- **Explain how mitigation and adaptation policies and measures in health and related sectors can benefit human health**

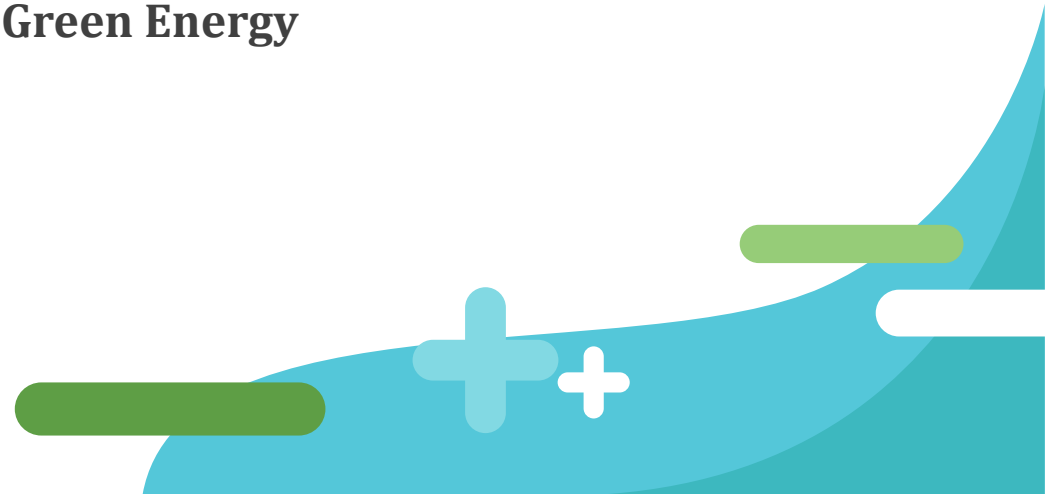


Globular Health Initiative

Course Structure and Content

**The course
is structured
around four
basic modules:**

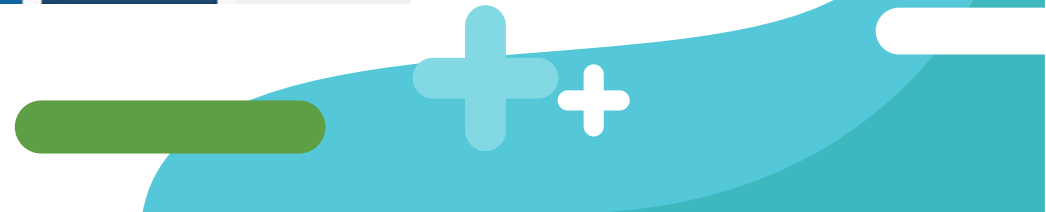
- 1. Sustainable Development Goals
(outline of Goal 13 and Goal 3)**
- 2. Climate Change and Human Health**
- 3. Effects of The Coal Industry on Climate
Change and Human Health**
- 4. Sustainable Green Energy**





Globular Health Initiative

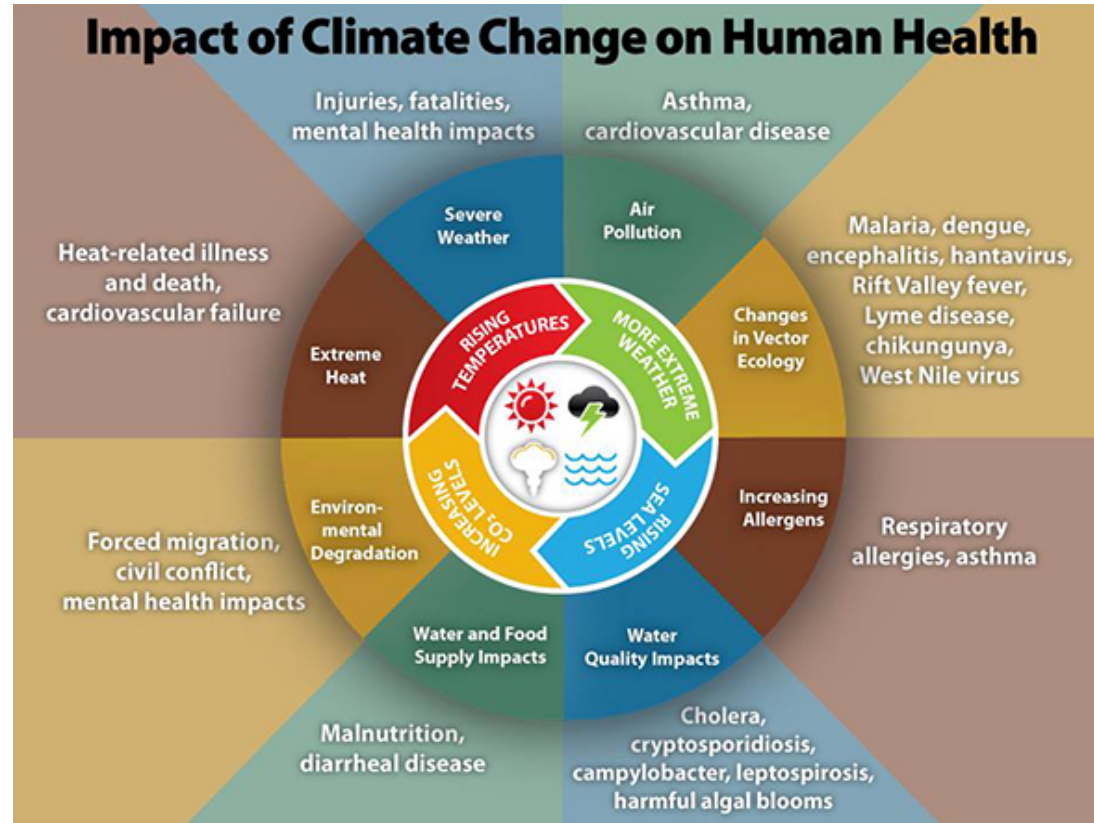
Module 1: Introduction to Sustainable Development Goals





Globular Health Initiative

Module 2: Climate Change and Human Health





Globular Health Initiative

Module 3: Effects of The Coal Industry to Climate Change and Health

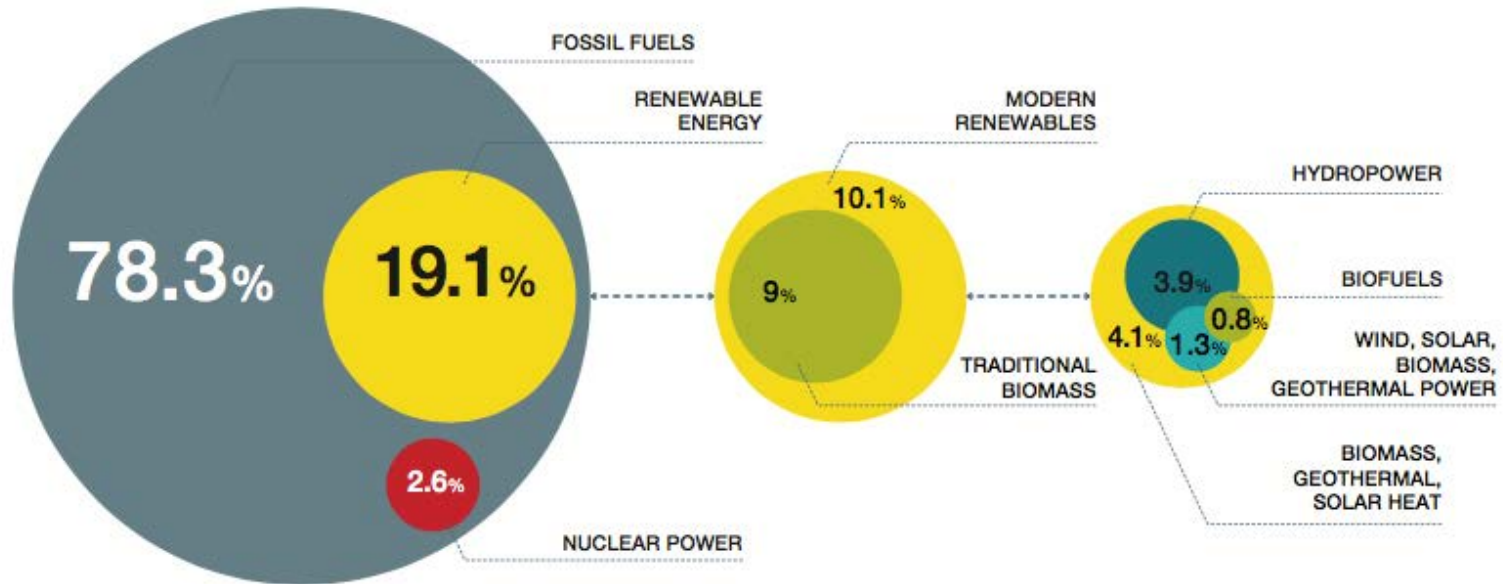




Globular Health Initiative

Module 4: Sustainable Green Energy

FIGURE 3.1 | ESTIMATED RENEWABLE ENERGY SHARE OF GLOBAL FINAL ENERGY CONSUMPTION 2013

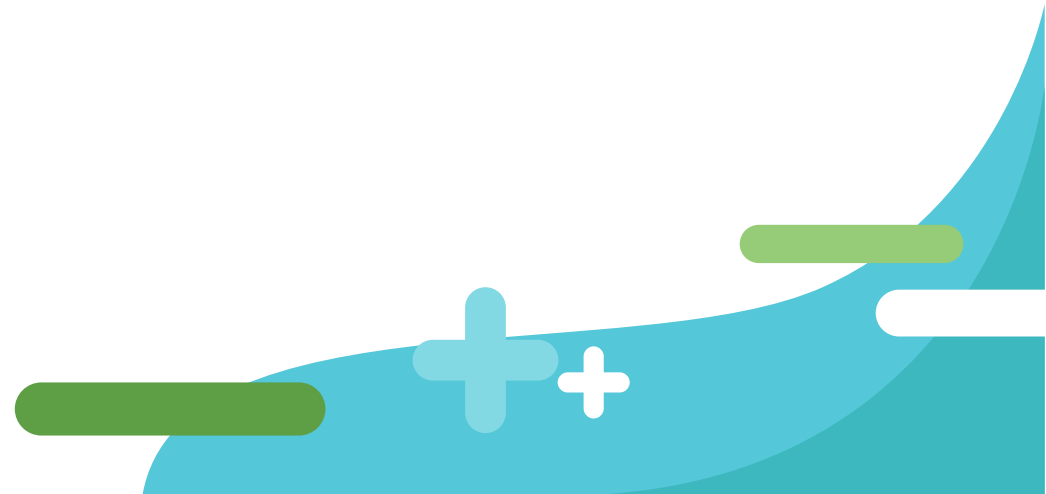




Globular Health Initiative

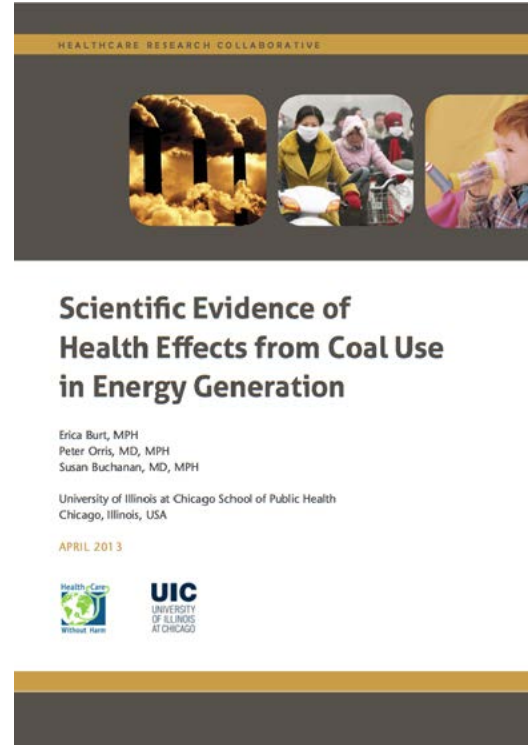
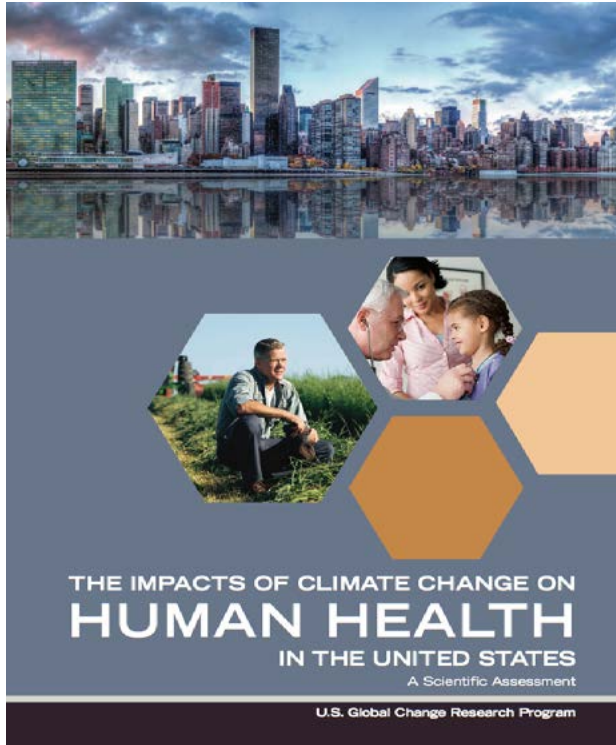
Methodology and Certification

- 1. Maximum participants of 30 for training course**
- 2. All materials will be given by an expert on the subject per module respectively**
- 3. At the end of the fourth module, participants will be divided to smaller groups to discuss and prepare a presentation on a feasible project management for renewable energy supply.**



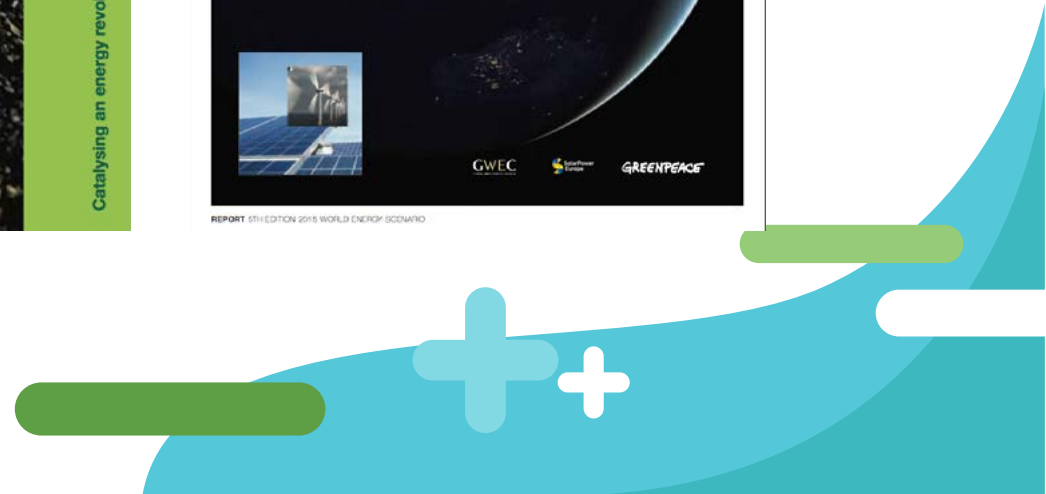
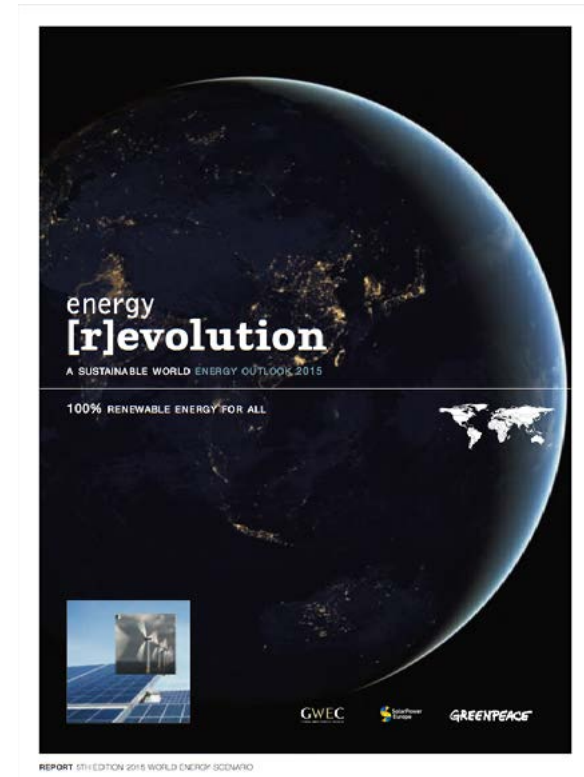
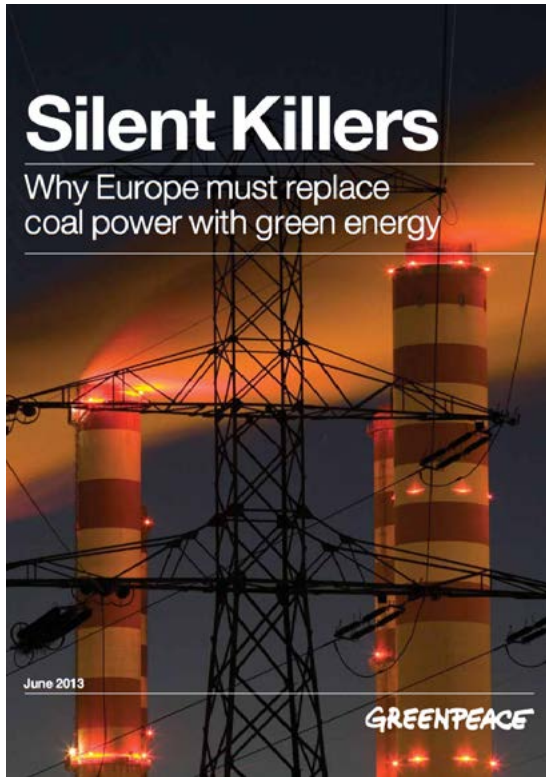


Globular Health Initiative





Globular Health Initiative





Globular Health Initiative



Contact



@globular_hi



Globular Health Initiative



globular.hi

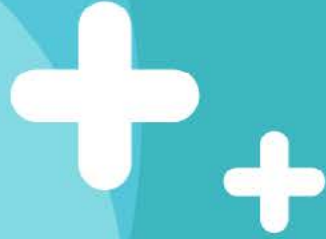


@globular.hi





Globular Health Initiative



Bridging Ideas For A 
Healthier Future

